

Sale Station

Help Manual

Chapter 1.

What is Sale Station?

Sale Station or point of service (POS or PoS) can mean a retail shop, a checkout counter in a shop, or the location where a transaction occurs. More specifically, the Sale Station often refers to the hardware and software used for checkouts -- the equivalent of an electronic cash register. Sale Station systems are used in supermarkets, restaurants, hotels, stadiums, and casinos, as well as almost any type of retail establishment.

Features:-

- 1) Sale Item(s)
- 2) Inventory Management.
- 3) Order and Vendor Management
- 4) System Administration.
- 5) Reports generation.

Uniqueness:-

- 1) Custom made software
- 2) Multi user-LAN Enabled
- 3) Enhanced Scrutiny
- 4) Truly Extensible Solution
- 5) Rich Set of Reports


-:Home Page:-

Saltlake Infosolutions Pvt. Ltd. :- 'Sale Station'

Sales Inventory Purchase Manage Help

Home Saltlake Infosolutions Pvt. Ltd. Login Logout Help

SIPL: Home



Sale Station or point of service (POS or PoS) can mean a retail shop, a checkout counter in a shop, or the location where a transaction occurs. More specifically, the Sale Station often refers to the hardware and software used for checkouts -- the equivalent of an electronic cash register. Sale Station systems are used in supermarkets, restaurants, hotels, stadiums, and casinos, as well as almost any type of retail establishment.

Sale Station

Sales

Make a Sale Sales History

Inventory

New Item View Item(s) Discount Manager Tax Manager

Purchase

Manage Item(s) Receive Order Order Details New Order Vendor Details New Vendor

Administration

Manage User(s) View Report(s) Configure Shop

Figure:-1

Chapter 2.

-:User Login:-

Initially login screen will appear in front of the user when APSS will be started through the browser(IE6).The following figure and detailed explanation will guide the user to proceed with APSS.

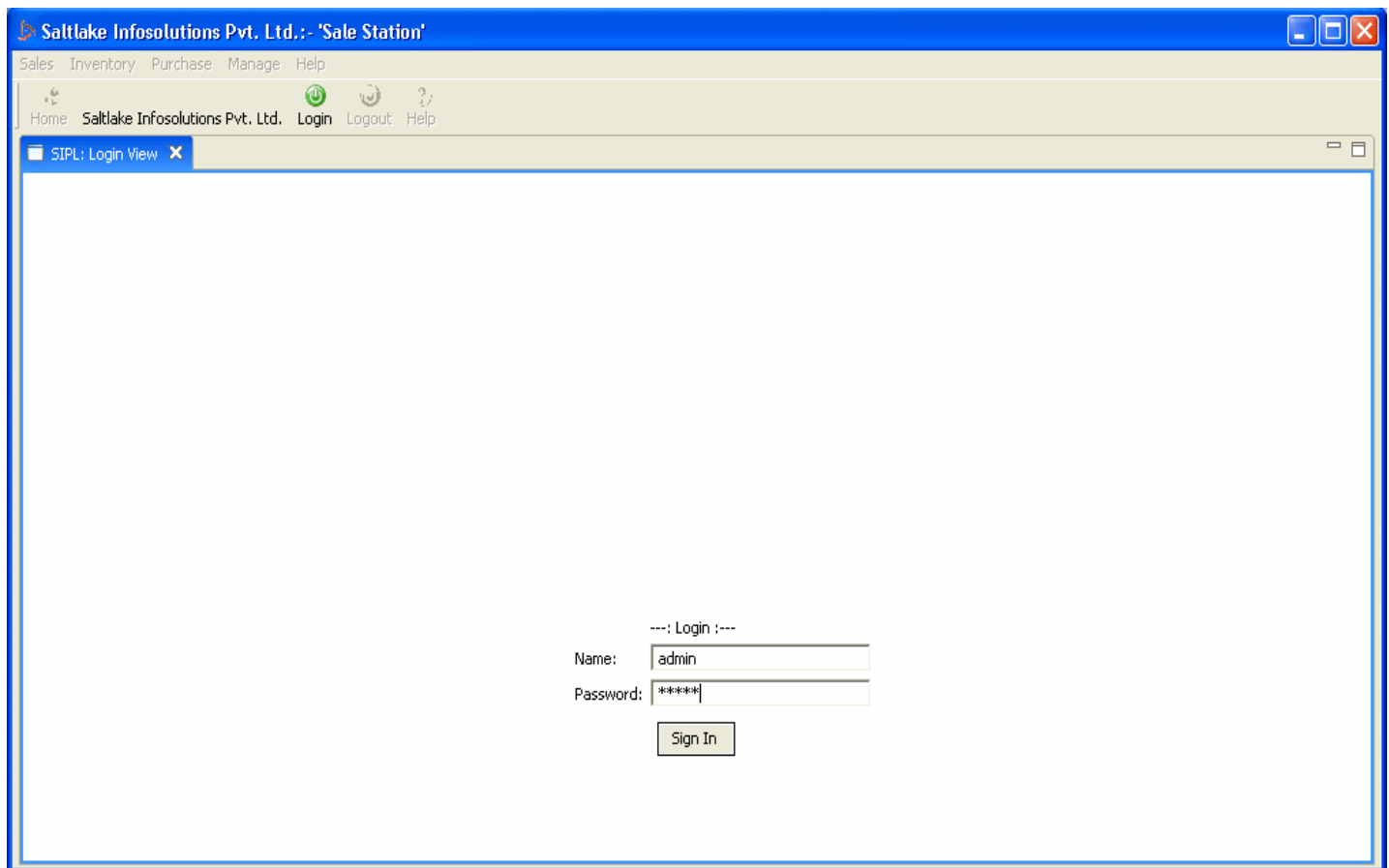


Figure:-2

- step 1: Provide user name in the box beside the heading "Name".
- step 2: Provide password in the box beside the heading "Password".
- step 2: Click on the "Log In" button to log in.

* If the user is not able to log in successfully by following above mentioned steps then please contact the Administrator.

Chapter 3.

-:Sales Management:-

Make a new sale :-

- Step 1: **Open Sale window** : Go to "Sales" menu->Sale. or Click 'Make a Sale' button from 'Sales ' section.

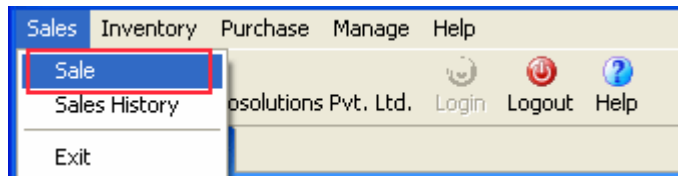


Figure-3

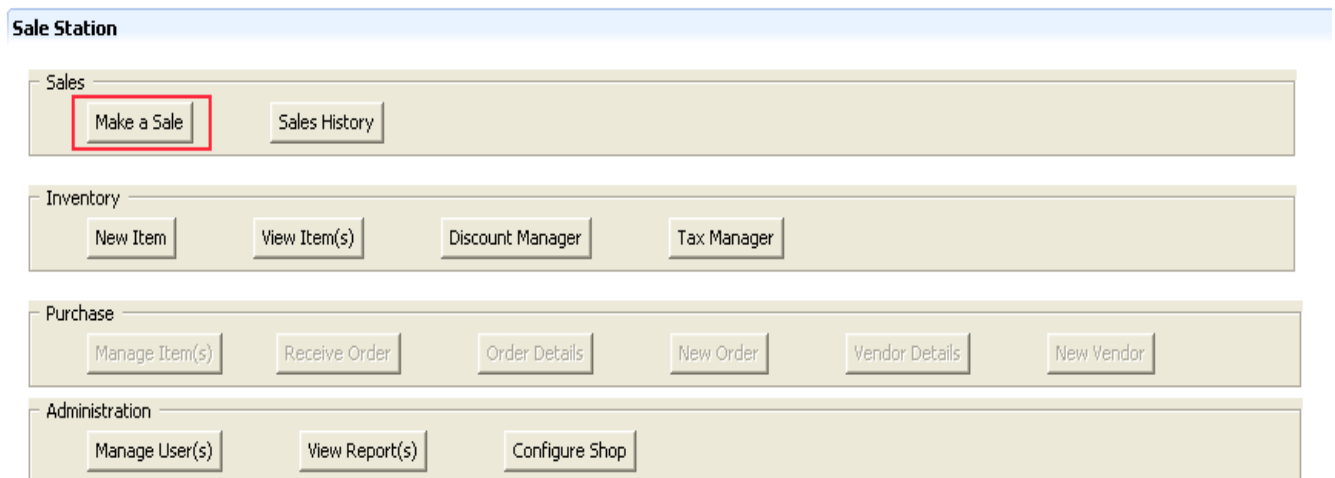


Figure-4

- Step 2: "Scan item's barcode "

Sales Details Section

Item Id:

Id	Product Name	Description	Available	Quantity	Price	Disc(%)	Tax(%)	Disc. price
123	Toothpaste	This is a toothpaste	20	1	25.0	0.0	0.0	25.0
234	Shampoo	Shampoo	20	1	40.0	0.0	4.0	41.61

Figure-5

Edit Quantity:-

Using barcode reader Scan new Item's price to add it.

Sales Details Section

Item Id:

Click & add new Quantity.

Id	Product Name	Description	Available	Quantity	Price	Disc(%)	Tax(%)	Disc. price
123	Toothpaste	This is a toothpaste	20	<input type="text" value="1"/>	25.0	0.0	0.0	25.0
234	Shampoo	Shampoo	20	1	40.0	0.0	4.0	41.61

Figure-6

Update Item Quantity :-

To update Item Quantity Click on the 'Quantity' field of that item and enter new Quantity.

Sales Details Section

Item Id:

Click & add new Quantity.

Id	Product Name	Description	Available	Quantity	Price	Disc(%)	Tax(%)	Disc. price
123	Toothpaste	This is a toothpaste	20	1	25.0	0.0	0.0	25.0
234	Shampoo	Shampoo	20	1	40.0	0.0	4.0	41.61

Figure-11

Chapter 4.

-:Inventory Management:-

Add New Item :-

- Step 1: **Open Sale window** : Go to "Inventory" menu->New Item . or Click 'New Item' button from 'Inventory ' section.

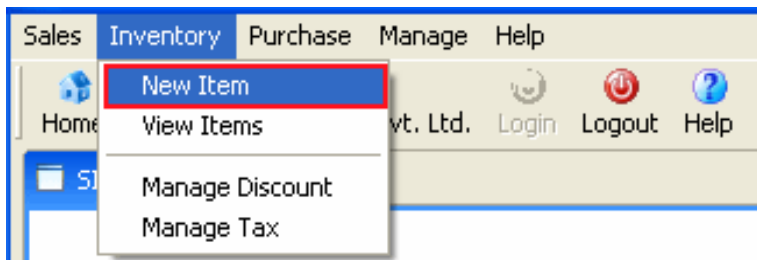


Figure-12

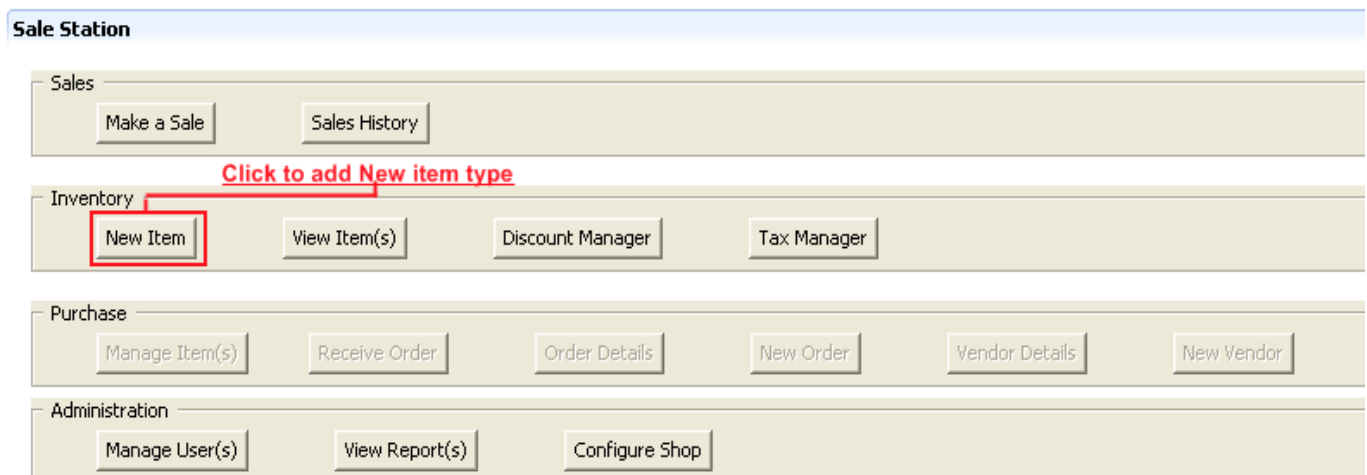


Figure-13

- Step 2: Fill all necessary fields with proper data and save the new Item.

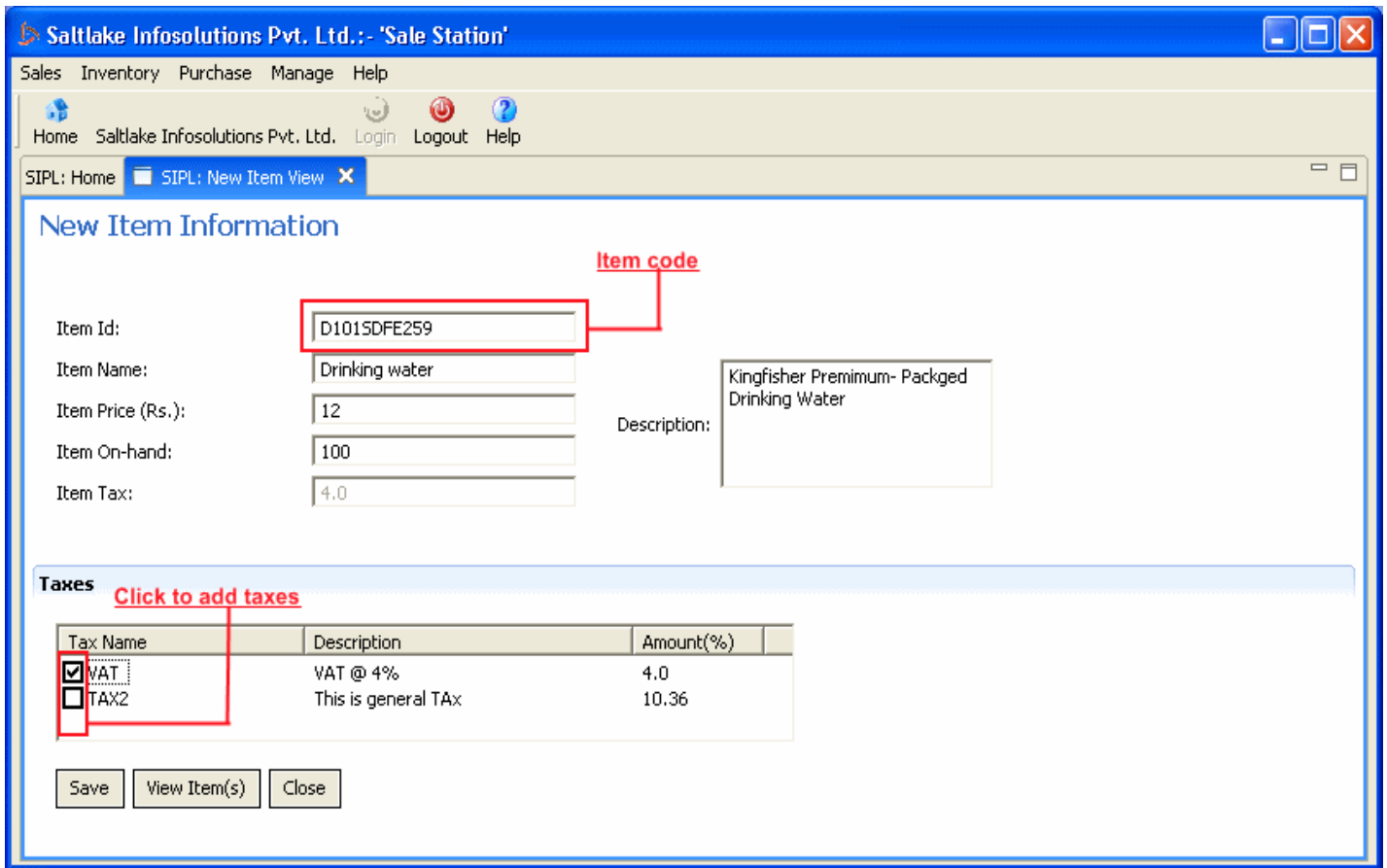


Figure-14

View Item Details :-

To view item details go to "Inventory" menu->View Item . or Click 'New Item' button from View Item(s)' section.

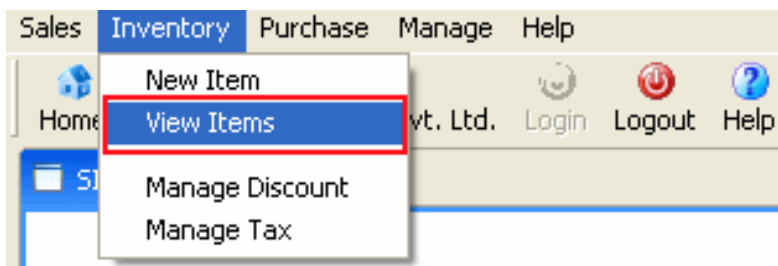


Figure-15

Items Informations

Item details

ID	Name	Description	Price	Discount(...	Available	On-hand	Ordered	Damaged	Retu...
123	Toothpaste	This is a toothpaste	25.0	0.0	20	120	120	0	0
234	Shampoo	Shampoo	40.0	0.0	20	232	232	0	0
400	Dell Monitor	Dell Monitor...	2000.0	0.0	0	405	405	0	0
401	Dell Laptop	Dell Lap.	5000.0	0.0	0	330	130	0	0
403	Demo Item	Demo Description	230.0	0.0	0	421	321	0	0

Figure-16

Edit Item Price :-

To view item details go to "Inventory" menu->View Item . or Click 'New Item' button from View Item(s)' section.

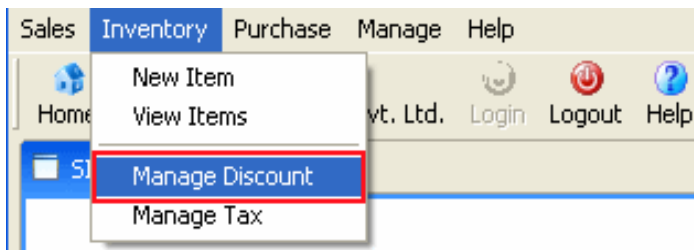


Figure-17

Items Informations

Item details

ID	Name	Description	Price	Discount(...	Available	On-hand	Ordered	Damaged	Retu...
123	Toothpaste	This is a toothpaste	25.0	0.0	20	120	120	0	0
234	Shampoo	Shampoo	40.0	0.0	20	232	232	0	0
400	Dell Monitor	Dell Monitor...	2000.0	0.0	0	405	405	0	0
401	Dell Laptop	Dell Lap.	5000.0	0.0	0	330	130	0	0
403	Demo Item	Demo Description	230.0	0.0	0	421	321	0	0

Figure-18

Items Informations

[Click to select the Item](#)

ID	Name	Description	Price	Discount(...)	Available	On-hand	Ordered	Damaged	Retu...
123	Toothpaste	This is a toothpaste	25.0	0.0	20	120	120	0	0
234	Shampoo	Shampoo	40.0	0.0	20	232	232	0	0
400	Dell Monitor	Dell Monitor...	2000.0	0.0	0	405	405	0	0
401	Dell Laptop	Dell Lap.	5000.0	0.0	0	330	130	0	0
403	Demo Item	Demo Description	230.0	0.0	0	421	321	0	0

[Click to edit the Item](#)

Figure-19

Tax Management:-

To view item details go to "Inventory" menu->View Item . or Click 'New Item' button from View Item(s)' section.

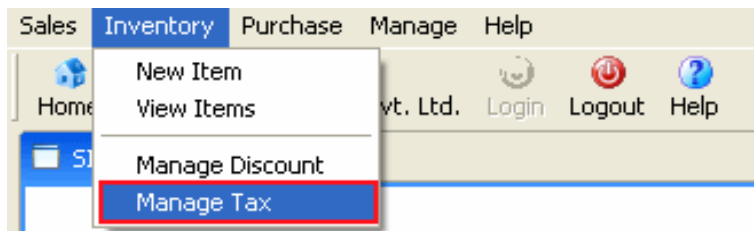


Figure-20

or click on 'Tax Manager' fom Inventory section.

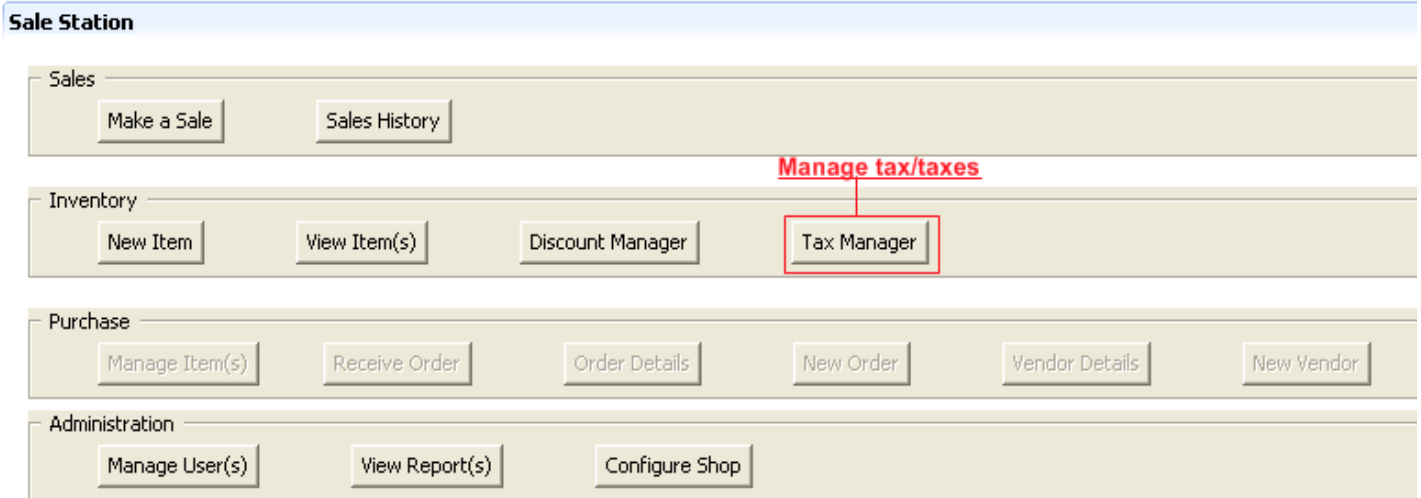


Figure-21

New Tax type Creation:-

New Tax

Tax Name:

Tax Percentage:

Tax Description:

Figure-22

Edit Taxes:-

Open 'Manage Tax' from as mentioned above. Then select a tax type from 'Existing Taxes' section & click on 'Edit Tax' button.

Existing Taxes [Click to select an existing tax](#)

ID	Name	Description	Tax Percentage(%)
1	VAT	VAT @ 4%	4.0
2	TAX2	This is general TAX	10.36

Save new tax rate(%)

Figure-23

Set Item wise Discount :-

Step1: To set item discount go to "Inventory" menu->Manage Discount . or Click 'Discount Manager' button from 'Inventory' section.

Sales **Inventory** Purchase Manage Help

Home

wt. Ltd.

Figure-24

Sale Station

Sale Station interface showing navigation menus:

- Sales:** Make a Sale, Sales History
- Inventory:** New Item, View Item(s), **Discount Manager**, Tax Manager
- Purchase:** Manage Item(s), Receive Order, Order Details, New Order, Vendor Details, New Vendor
- Administration:** Manage User(s), View Report(s), Configure Shop

Figure-25

Step2:

Price Manager(Change Discount)

Price Manager(Change Discount) interface showing a table of items:

ID	Name	Description	Price	Discount(%)
123	Toothpaste	This is a toothpaste	25.0	0.0
234	Shampoo	Shampoo	40.0	0.0
400	Dell Monitor	Dell Monitor...	2000.0	0.0
401	Dell Laptop	Dell Lap.	5000.0	0.0
403	Demo Item	Demo Description	230.0	0.0

Buttons: Edit, Close

Figure-26

End